

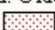
LAB EXERCISE 1 - CRYSTAL SYSTEMS

Name:	Course ID:
-------	------------

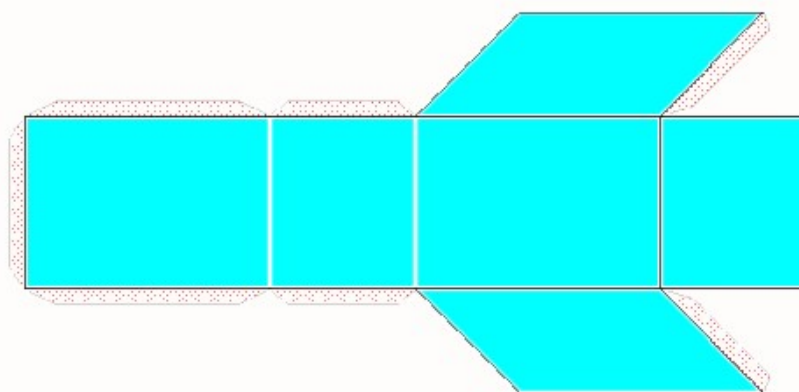
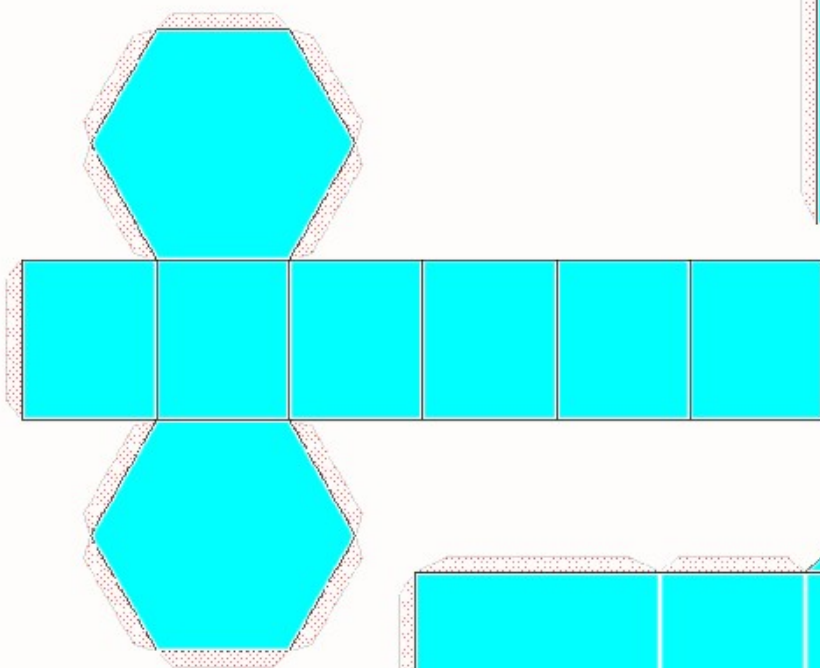
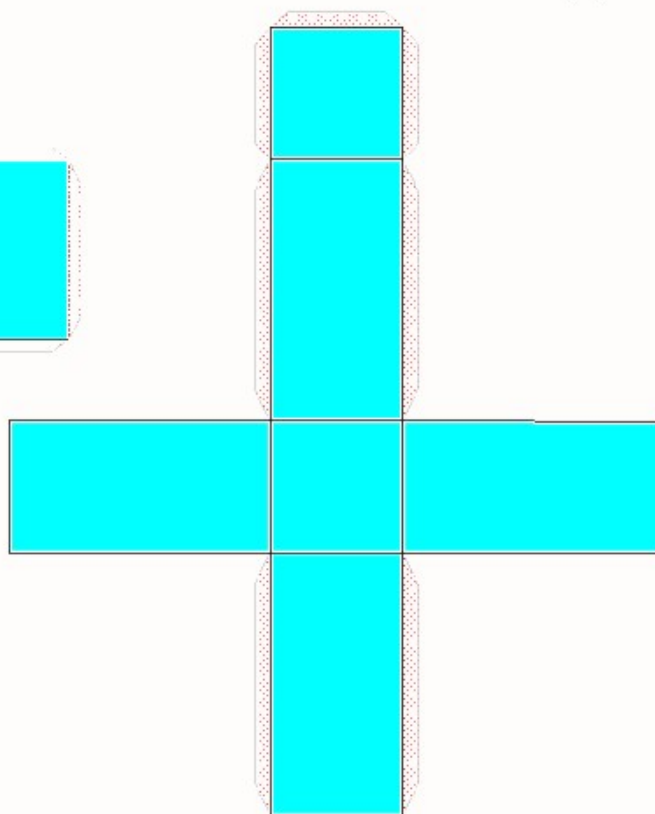
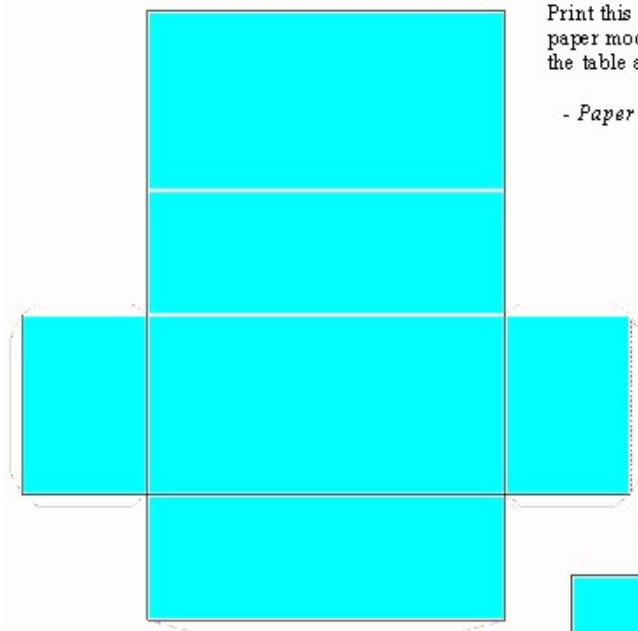
The attached sheet contains buildable paper models of the crystal systems discussed. Complete the table below by building each paper model. Indicate a short description of each crystal class and list mineral samples studied in class with their correct crystal system.


ISOMETRIC (Paste paper model here!)	Short description of crystal class:	Mineral(s) from study kit belonging to this class:
TETRAGONAL (Paste paper model here!)	Short description of crystal class:	Mineral(s) from study kit belonging to this class:
ORTHORHOMBIC (Paste paper model here!)	Short description of crystal class:	Mineral(s) from study kit belonging to this class:
MONOCLINIC (Paste paper model here!)	Short description of crystal class:	Mineral(s) from study kit belonging to this class:
TRICLINIC (Paste paper model here!)	Short description of crystal class:	Mineral(s) from study kit belonging to this class:
HEXAGONAL (Paste paper model here!)	Short description of crystal class:	Mineral(s) from study kit belonging to this class:
HEXAGONAL - RHOMBOHEDRAL (Paste paper model here!)	Short description of crystal class:	Mineral(s) from study kit belonging to this class:

(Intentionally left blank for printing)

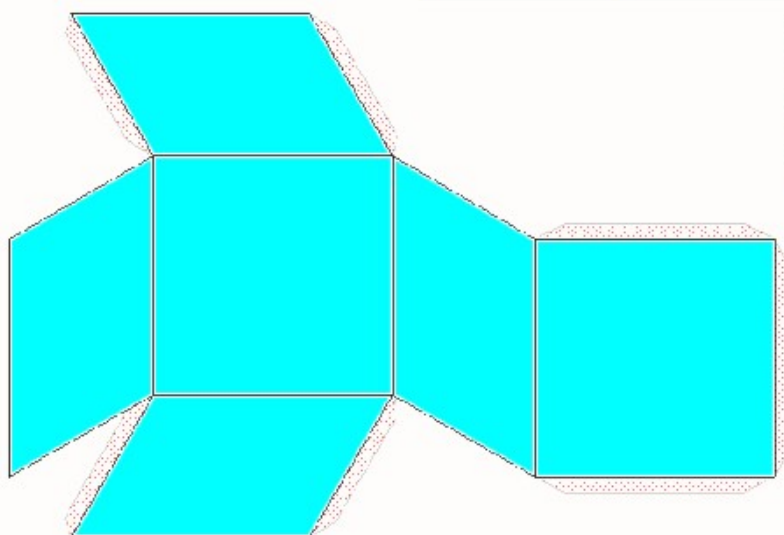
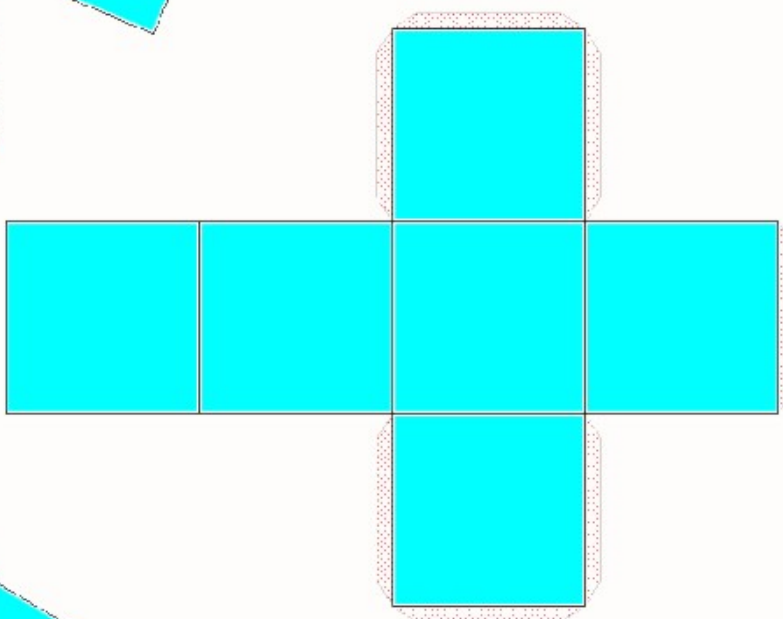
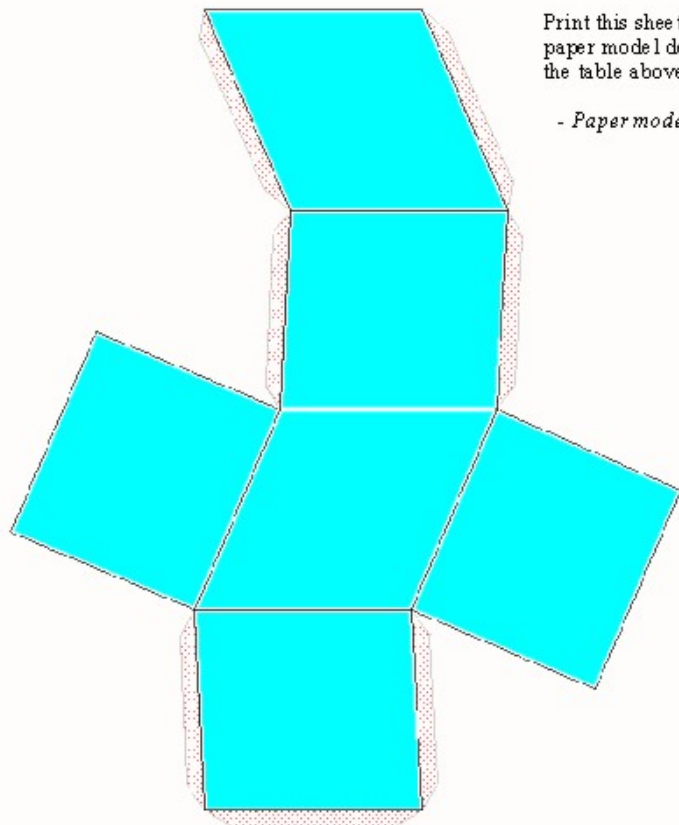
Print this sheet on cardstock or heavy paper. Cut and paste each crystal paper model depicted. Glue each finished model in its respective field in the table above. The  indicate glue tabs.

- Paper models created with *KrystalShaper - Version 1.1.1 (03/01/2008)*,
www.jcrystal.com



Print this sheet on cardstock or heavy paper. Cut and paste each crystal paper model depicted. Glue each finished model in its respective field in the table above. The  indicate glue tabs.

- Paper models created with *KrystalShaper - Version 1.1.1 (03/01/2008)*,
www.jcrystal.com



(Intentionally left blank for printing)

(Intentionally left blank for printing)